

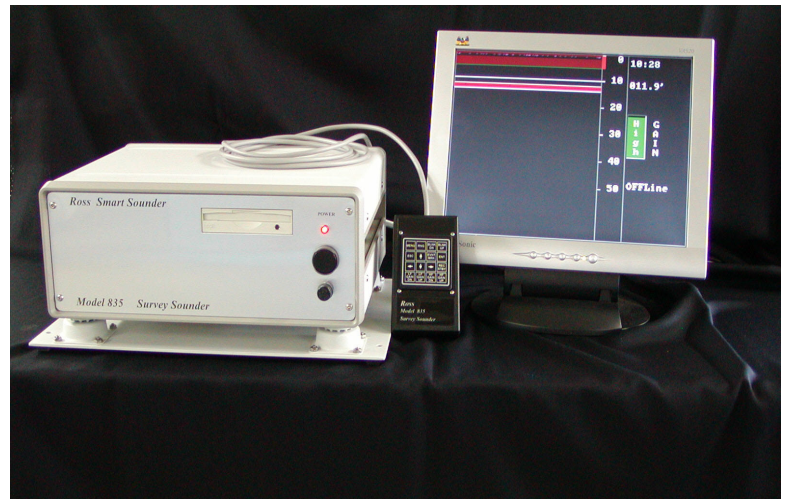
Model 835

Desktop Survey Recorder (Single or Dual Frequency)

The Technology of a Ross Smart Sounder outputs reliable depth data for data acquisition systems.

All of the quality and performance that you expect from a Ross sounder in a small easy to operate package, for interior installation (desktop or under a counter).

- **Simple Remote Key Pad control.**
- **Digital storage of sounding chart - 20GB Hard Drive**
- **USB memory stick data download**
- **SVGA Output (Monitor optional)**
- **Data logging software. (optional)**
- 12v DC or 115v AC.
- Interior use – multiple mounting options
- NMEA-0183 output.
- Position data input ports with logging software option.



Size – 14.3”w x 5.8”h x 14.0”d

Weight - 17 lbs.

Temperature - operating 0° to 50° C
- storage -25° to 75° C

Humidity - 0 to 95% RH

200 kHz Standard Configuration

Additional Frequency choices:

100 kHz 50 KHz

28 kHz 12 kHz

Custom frequencies are also available.

Ross Laboratories, Inc. • 3138 Fairview Ave E. • Seattle, WA 98102 USA

(206) 324 - 3950 • FAX (206) 329 - 0250

<http://www.rosslaboratories.com>

Email: info@rosslaboratories.com